

# PALMETTO PIPES

PALMETTO REGION

PORSCHE CLUB OF AMERICA

MARCH 1995

## *Next Meeting*

Our March meeting will be held at Pier 61 Restaurant located at 652 St. Andrews Boulevard in West Ashley (Charleston). The meeting will start promptly at 7 PM. Come join in the fun!! For directions to Pier 61, just follow the attached map.

## *From D' Prez*

*Porsche fans rejoice! If you didn't go to the Rolex 24 Hours at Daytona, you missed a great race. Porsche WON! To bad Mario Andretti didn't get to race. Maybe at Sebring. Let's keep our fingers crossed.*

*Our next meeting will be at Pier 61 Restaurant, March 14th. Come hungry, the food is excellent.*

*Thanks to Sam and Nancy Kelly for hosting the February meeting. The sub was delicious.*

*Our first rally for this year will be Sunday, March 26th. Registration at 12 Noon at the Sears parking lot at Citadel Mall. The first car out at 1PM. A social gathering to follow at Sports Rock Cafe on Montague Avenue and I-26. Winners get a surprise. See you at the finish.*

*Al Trego*

## **AUTOCROSS**

Jon Simmons, a member of SCCA, attended our last meeting and invited everyone interested to participate in SCCA's Autocross events which will be held monthly. The first for this year will held on April 23 at the SC Federal Credit Union parking lot at the McMillan Gate Entrance to the Charleston Navy Base. Just take Cosgrove Avenue east. Tech Inspections will begin at 10:30 with first car out at Noon. Fee is \$10 to SCCA Members and \$15 to non-SCCA members.

The second SCCA Autocross will be held on May 7 with the remainder of the schedule is to be announced.

For more information contact Jon Simmons at 572-3623.

Palmetto Region is continuing the search for autocross sites for PCA. If you know of a possible location please contact one of the officers.

## **WELCOME TO NEW MEMBERS**

A hardy welcome to all who have recently joined PCA! We extend to all new members a cordial invitation to attend our Palmetto Region meetings. Meetings are held monthly - generally on the second Tuesday of each month at different locations. Meetings are informal, mostly social occasions, and lots of fun!! Come join in!

Added recently to our membership are:

Dr. Richard and Deane Henderson  
Hilton Head - '85 911

Jerry and Mari Seay  
Charleston - '73 911S

Robert and Harriett Brunner  
Transfer from Maumee Valley  
Charleston - '77 911S

Lovitte and Phyllis Faircloth  
Mt. Pleasant - '65 911

Gene and Jeanette Widener  
Columbia - '80 911 Coupe

Andrew Turrisi and Richard Oliver  
Transfer from Southern Michigan  
Charleston - '86 911

Palmetto Region currently has approximately 140 members. But, there are a lot of Porsche drivers who are not PCA members. If you know someone who drives a Porsche but is not a member of PCA, invite him or her to join! "Pano" alone is worth the cost of membership!! And thanks to all of you who have helped bring in new members recently.

# Overheard -

**Bob Via** and **Gordon Freidman** participated in a Driver's Ed at Roebing Road and were priveleged to have Bob Chick (winner of SCCA Solo One) as instructor. Via got the evidence on film and gamely showed it all at last month's meeting. Five thumbs up!

**Marcia Roof** prepared last month's Tech Quiz. How many lug bolts on a 911? Thanks, Marcia!

## COMMEMORATIVE 25th ANNIVERSARY WINDOW DECALS

Decals similar to the kind distributed upon membership renewals, are still available (free), printed by PCA National for the observance of the Palmetto Region's 25th Anniversary last year. They will be handed out at future meetings, or by sending a SASE to Dale Conrad, P.O. Box 97, Mt. Pleasant, SC 29465. There is one decal for each active member and for each family active member.

## COMMEMORATIVE T-SHIRTS

**T-Shirts printed with Porsche Artwork are now available.** These are gray, 100% cotton, pre-shrunk Hanes "Beefy-Tee", with 2-color ink, and a front pocket! Artwork by our own Tug Mathisen. Large and X-Large sizes are available. Contact any officer, or better yet, attend an upcoming meeting where the shirts will be available. The price is only \$12. They make a great gift.

## COMING UP

**March 18** The Alabama Region PCA is hosting a Driver's Education at Talledega Gran Prix Raceway, Talledega, AL. Contact Rick Teer evenings at 205-798-5404.

**March 18** SEBRING

**March 24-26** BMW Car Club Drivers School at Road Atlanta

**April 1-2** Car Guys On-Track Driver Education at Rockingham

**April 8-9** PCA Club Racing in Atlanta.

**April 15-16** Try out the high banks!! Blue Ridge Region PCA Drivers' Education at Charlotte Motor Speedway, Charlotte, NC., \$195. Call Mickey Dowling at (703) 774-9301. Please call before 10PM.

**April 22-23** Car Guys Inc. On-track Driver Education at Roebing road. \$325 Telephone: 800-800-4897.

**April 22** Walter Mitty Challenge for Vintage Cars at Road Atlanta.

**April 29** SCCA Solo One Chimney Rock Hill Climb. Note: This is the last year this event will be held at Chimney Rock

**May 5-6** PCA Club Racing at Mid-Ohio

**May 6-7** Drivers Education at Road Atlanta, Peachtree PCA

**May 13-14** Car Guys Inc. On-Track Driver Education at Road Atlanta. \$450. Telephone: 800-800-4897

**May 19-20** PCA Club Racing at Lime Rock, Conn.

**May 20-21** Tar Heel Chapter BMW CCA Driver's School at Roebing Road.

## CLASSIFIED

**C & C Custom (open) Race Car Trailer**, new axles with dual electric brakes, new tires, weighs only 1000 pounds, tow's great. \$1200

**Replica Alloys - 7" and 8"** \$500 set with race rubber.

**7" BBS Wheels** \$500 set.

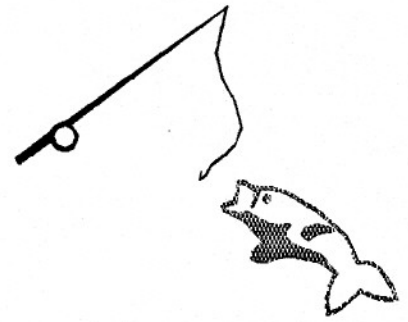
**914-4 Mahle Alloys** with caps and lug bolts \$400 set

**Call Allen Roof at 803-791-4946 Evenings**

**Berlin Radio - Controls on stalk. Call Robear at 795-9256.**



**PIER 61 LTD.**  
 Restaurant and Catering  
 652 St. Andrews Boulevard  
 Charleston, SC. 29407  
 (803) 571-7533



## DINNER

### Appetizers

<i>Crab Soup Royale.....Cup \$2.50.....Bowl \$3.50</i>	<i>Barbecued Shrimp on a Skewer.....\$4.15</i>
<i>Yellow Squash Boat stuffed with Crab Salad.....\$4.15</i>	<i>SC Alligator Tail (In Season Only).....\$4.95</i>
<i>Oyster Cocktail (In Season Only).....\$4.75</i>	<i>Fried Chicken Tenderloins</i>
<i>Barbecued Calamari.....\$4.75</i>	<i>with Honey Mustard Sauce.....\$4.15</i>

### Salads

<i>Seafood Salad Plate...Shrimp, Scallops and Fish of the</i>	<i>Dinner Salad.....\$1.95</i>
<i>Day on Lettuce.....\$6.25</i>	<i>Greek Salad.....Small \$3.50.....Large \$5.95</i>
<i>Crab Louis...Lettuce topped with Crab Salad and</i>	<i>Shrimp Salad Plate.....\$6.25</i>
<i>Sauce Louis.....\$5.95</i>	

*Above Salads served with your choice of dressing*

### Entrees

<i>House Special...Flying Flounder, Shrimp</i>	<i>Prime Rib of Beef.....Large Cut \$14.95.....English Cut \$12.95</i>
<i>and Scallops.....\$13.95</i>	<i>French Dip Sandwich.....\$ 8.95</i>
<i>Fresh Fillet of Flounder....Small \$10.95.....Large \$12.95</i>	<i>Filet Mignon, 6 ounce. ....\$13.95</i>
<i>Oysters (In Season Only).....\$11.95</i>	<i>London Broil with Mushroom Gravy.....\$ 9.25</i>
<i>Canadian Scallops.....\$11.95</i>	<i>Country Fried Chicken Tenderloins.....\$ 8.50</i>
<i>Shrimp.....\$10.95</i>	<i>Grilled, Marinated Chicken Breast.....\$ 9.95</i>
<i>Crab Platter, Deviled and Soft Shell.....\$10.95</i>	
<i>Calamari Steak.....\$ 8.95</i>	

*Combo Platter... Shrimp St. Jacques and Fried Chicken Tenderloins... \$12.95*

*Pier 61 Special... 4 ounce Filet Mignon with Bearnaise Sauce  
 and Coquilles St. Jacques Mornay.....\$15.95*

*All entrees served with Red Rice, Charleston Fries or Parsley Buttered Potatoes,  
 Cole Slaw or Salad, Rolls and Butter*

### Dessert

*Ask your server about Pier 61's Special Desserts*

### Beverages

*Tea.... .50 Coffee.... .50 Sanka.... .60 Milk.... .95 Soft Drinks.... .95*

*Extra plate \$2.00 - Orders to go .25 extra*

*Lunch Served From 11:30 - 2:30 Tuesday - Saturday  
 Dinner Served From 5:30 - 9:00 Tuesday - Thursday  
 5:30 - 9:30 Friday - Saturday*

*We accept Discover Card, MasterCard and Visa  
 Pier 61 is available for private parties. Inquire.*

# FOCUS ON THE 356

Even though Porsche was serious about building a production sports car, there were numerous obstacles to overcome. It was 1948, Europe was recovering from a war, materials were hard to come by, the occupation slowed everything down. Changes were needed in the design of the car itself if Porsche was to evolve into true series production.

Beginning with car #2, a number of major changes were made. In order to solve problems created by reversing the VW engine, transmission, and rear suspension in 356-1, everything was flipped back around, placing the engine behind the rear axles like the VW. This made production easier as well as providing luggage space behind the front seats. The idea of a tubular frame was abandoned for a less expensive and time consuming platform construction. Utilizing most of the design elements of the Roadster body, Erwin Komenda gave the car a roof; creating the shape that is uniquely Porsche. This coupe was more comfortable and quiet than the first open Roadster.

When Heinrich Nordhoff assumed control of VW in January 1948, access to components became much easier. Orders were beginning to increase, so in 1949 Porsche contracted with Reuter for 500 car bodies and the small factory was moved to Stuttgart from Gmund, Austria. A total of 46 cars had been built during the period June 1948 to March 1951. This, of course, was only the beginning. By the introduction of the 356A in 1956, 10,000 cars had been produced, many finding a home in the United States. The car had steadily improved during the early 50's - body and interior improvements, wider wheels, upgrading of the suspension and gearbox, and a 1600cc, 75 HP engine. Top Speed 112 MPH.

## Tech Talk

### Hand Throttle Addition

On early 911's and 914's an additional lever assembly was part of production and that was a hand throttle. On the carb models it was especially beneficial in cold climates due to the lack of any choke mechanisms.

Converting to a hand throttle on cars without is very straightforward and a simple bolt on. For those who are undertaking converting to carbs on 4 cylinder 914's or

converting a 4 to a 6, the addition of this lever is highly recommended.

Most pieces are available from used parts suppliers from early 911's. However, the price is not too out of line to purchase new from the dealer.

The basic parts needed are shown in Illustration I, i.e., the hand throttle which incorporates a friction (spring) washer that can be adjusted for tension through the torque on the assembly bolt. The actuating rod connects the hand throttle to the lever of the pedal cluster assembly.

Note on Illustration II that the lever (#22) is different from 4 to 6 in that

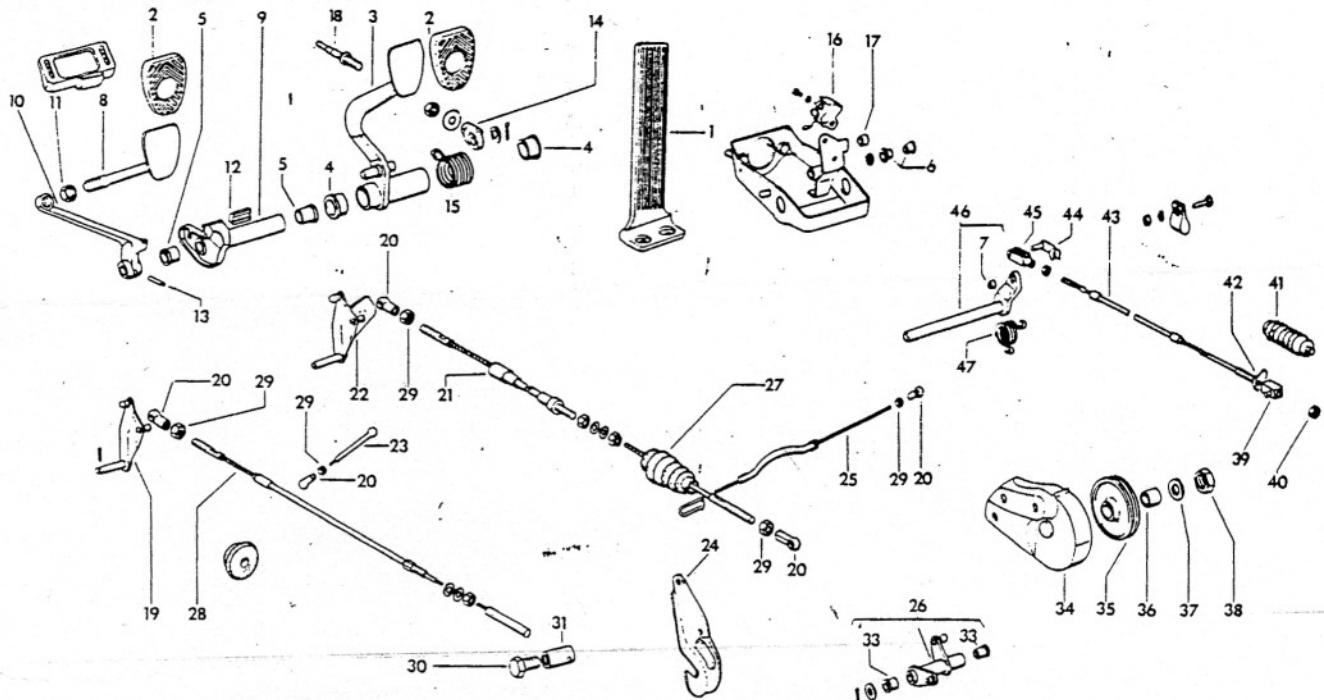
it has a tab tacked onto it to catch the actuating rod.

The support piece attaches at the front of the tunnel at the inspection plate while the hand throttle attaches under and through the shifter assembly with the actuating rod between the two.

Once in place, the engine should be warmed and the max RPM adjusted (on the rod at the ball and socket) to produce 4000RPM at full lever extension.

With the many conversions, injection to carb, 4 to 6, the addition of a hand throttle may be in your future.

**Allen Roof**

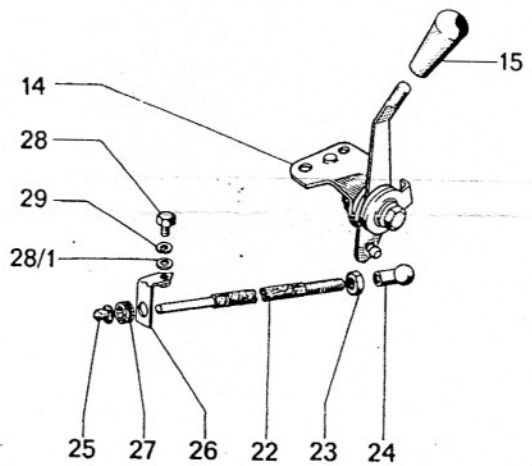
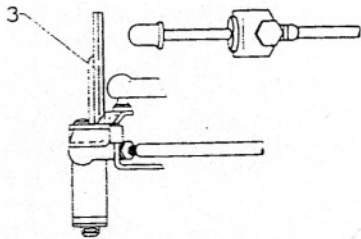
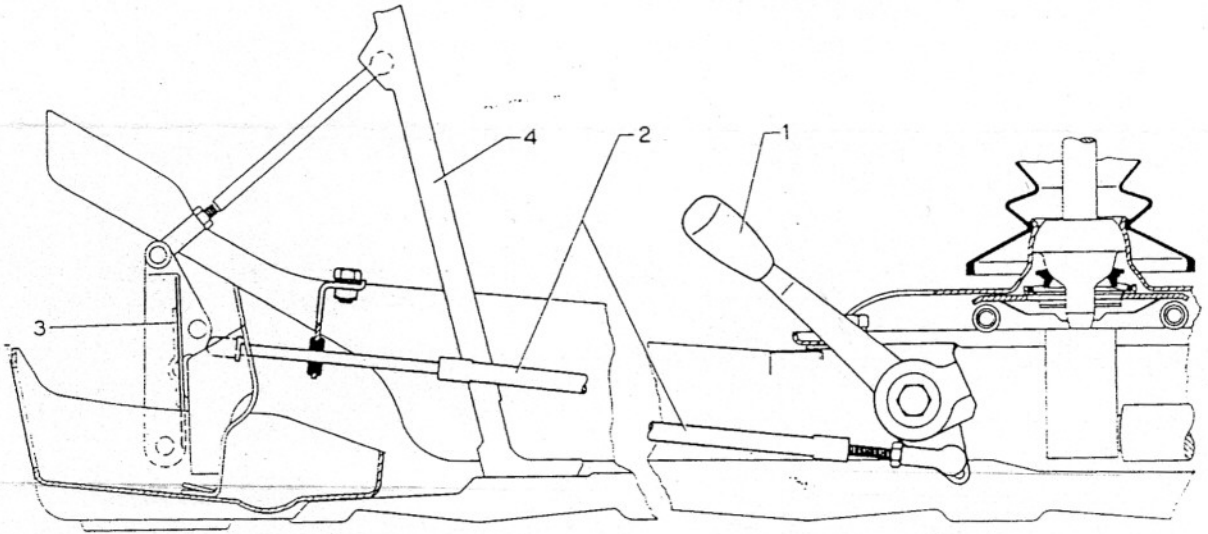


## CABLES & PEDAL ASSEMBLY

Illus.	Part Number	Description	Application			
1	914 423 010 00	Accelerator	All	24	914 423 285 01 Bracket	914-6
2	914 423 210 00	Pedal Pads	All	25	901 423 026 03 Accelerator Rod	914-6
3	901 423 053 02	Brake Pedal	All	26	914 423 025 01 Bell Crank	914-6
4	911 423 542 00	Bushing	All	27	914 423 593 00 Rubber Sleeve	914-6
5	911 423 341 01	Bushing	All	28	914 423 067 02 Accelerator Cable	914-4
6	901 423 253 00	Bushing	All	29	N 011 005 4 Nut (4)	All
7	901 423 343 00	Bushing	All	30	N 010 205 6 Bolt 5x10	914-4
8	914 423 034 00	Clutch Pedal Upper	All	31	111 129 921 Bearing Bolt	914-4
9	901 423 035 00	Tube	All	33	914 423 211 00 Bushing	914-6
10	901 423 312 00	Clutch Pedal Lower	All	34	914 423 030 02 Cover	All
11	900 183 002 02	Nut 14mm x 1.5	All	35	914 423 255 02 Pulley	All
12	901 423 391 00	Profile	All	36	914 423 273 00 Spacer	All
13	900 309 002 00	Spiral Pin	All	37	N 011 527 15 Washer 10x5	All
14	901 423 507 02	Intermediate	All	38	999 084 027 02 Nut	All
15	901 423 531 00	Spring	All	39	911 423 205 03 Anchor Pin	All
16	901 613 411 00	Stop Light Switch	All	40	N 021 193 1 7mm Nut	All
17	901 423 193 00	Rubber Stop	All	41	914 423 922 02 Rubber Sleeve	All
18	901 423 057 04	Piston Rod	All	42	914 423 283 00 Stop	All
19	901 423 250 02	Lever	914-4	43	914 423 401 05 Clutch Cable	914-4
20	900 169 001 02	Ball Socket	914-6		914 423 401 02 Clutch Cable	914-6
21	914 423 066 00	Accelerator Cable	914-6	44	999 166 001 02 Pin	All
22	914 423 260 00	Lever	914-6	45	900 166 002 02 Clevis	All
23	914 423 227 00	Pressure Rod	All	46	901 423 320 01 Clutch Pedal Shaft	All
				47	901 423 317 00 Spring	All

# ILLUSTRATION I

- 1- Hand Throttle Lever
- 2- Actuating Rod
- 3- Throttle Lever
- 4- Pedal



- 14- Hand Throttle
- 22- Actuating Rod
- 26- Support Piece
- Others--nuts, bolts, bushings, etc.

## 1995 BOARD OF DIRECTORS

<b>President</b>	<b>Al Trego</b>	<b>571-5674</b>
<b>Vice President</b>	<b>Sam Kelly</b>	<b>851-2616</b>
<b>Secretary and Newsltr Ed.</b>	<b>Richard Powell</b>	<b>722-2686</b>
<b>Treasurer</b>	<b>Tuggy Mathisen</b>	<b>556-1627</b>
<b>Membership Secretary</b>	<b>Karen Friedman</b>	<b>763-6740</b>
<b>Event Coordinator</b>	<b>Bob Chick</b>	<b>795-7437</b>



Contributions to the Newsletter are welcome. Publication deadline is the first day of the month prior to the next meeting date.

FAX or mail to Richard Powell at the following:

FAX: 803-722-4789

Mail: 27 Wentworth Street, Charleston, SC 29401

**Palmetto Region  
Porsche Club of America  
P.O. Box 97  
Mt. Pleasant, SC 29465**